
NEW ALOHA STADIUM COMMUNITY NEWSLETTER

March 1, 2023

Aloha From Aloha Stadium



Mahalo for joining us one last time at our closing ceremonies. It was a fun-filled day for all, which included a limited tour and viewing of the Hawaii Sports Hall of Fame, along with a special nostalgic display from the Old Queen Street Stadium Museum. Fans were given access to areas usually off-limits to the public, including locker

rooms, the field and other spaces filled with memorabilia and game-day experiences from the past 47 years. On-field activities included the Barefoot Field of Dreams drill station, ESPN meet & greet, entertainment and more! The Star-Advertiser's Dave Reardon connected with Aloha Stadium fans and a longtime former employee as they shared their favorite memories.

[READ MORE](#)

Project Update

Last week Gov. Josh Green announced during an interview with KHON2 that news of a three-stage plan for the district will be released in the coming weeks and will cover demolition of the existing stadium, construction of the new Aloha Stadium, and the creation of housing within the surrounding district. The NASED team is excited to work with Gov. Green and his team to finalize the details of this approach and deliver an exciting project.



Stay tuned for more details to come!

[WATCH HERE](#)

Frequently Asked Questions

Q: *How is NASED different from rail?*

A: The City and County of Honolulu's rail project is quite different from the public-private partnership (P3) being proposed for the construction of a new multi-purpose stadium and the development of a live-work-play-thrive community district. First and foremost, the city's transit line was originally envisioned as a design-build (DB) project with no private financing. Secondly, discussions about a public-private partnership (P3) for rail involved the final 4.16 miles, but ultimately did not move forward. NASED on the other hand has been envisioned as a public-private partnership (P3) from the very start, with planning following a model of Design-Build-Finance-Maintain (DBFM). Hawaii has yet to see a large public works project that was delivered using a true P3 model and NASED hopes to be the first! For more on DBFM, see our post about Optus Stadium.

[READ MORE](#)

In the Media



It's been said that "everybody wants to build and nobody wants to do maintenance." That's why a recent letter in the Honolulu Star-Advertiser caught our attention. The letter writer opines that every new construction project in Hawaii "should have as part of its budget the cost of maintaining it in good working order." The NASED team wholeheartedly agrees and that's why the planned approach requires the chosen developer for the new multi-purpose stadium to be responsible for maintaining the facility for 30 years under defined standards. After the 30-year term expires, the multi-purpose stadium must be returned to the state in "good working order." To read the entire letter to the editor about the importance of maintenance, click here:

[READ MORE](#)

Kama'ilio Korner

We're happy to introduce this new feature that provides an opportunity for community members and project stakeholders to talk story about the creation of a world-class community district and new multi-purpose stadium in the heart of Hālawā. In our premiere episode, we take a fun-filled visit to the Aloha Stadium Swap Meet and Marketplace to find out what people want to see in the new live-work-play-thrive district.



[WATCH HERE](#)

What's Going on at Aloha Stadium

Great Aloha Run

Rain or shine, over 11,000 individuals



participated in the 39th Annual Great Aloha Run on President's Day, Monday, Feb. 20. This year also marked co-founder Carol Kai's last race. Visit the Great Aloha Run (GAR) website to learn more:

[GAR WEBSITE](#)



Swap Meet Vendor Spotlight

We're happy to announce that longtime swap meet vendor – Lin's Hawaiian Snacks is back at the swap meet on Saturdays and Sundays from 7:00 AM to 2:00 PM.

In early December 2022 Lin's entire warehouse was destroyed by a fire. With a lot of hard work and an outpouring of community support they are rebuilding and on the road to recovery.

Click here for more info on:

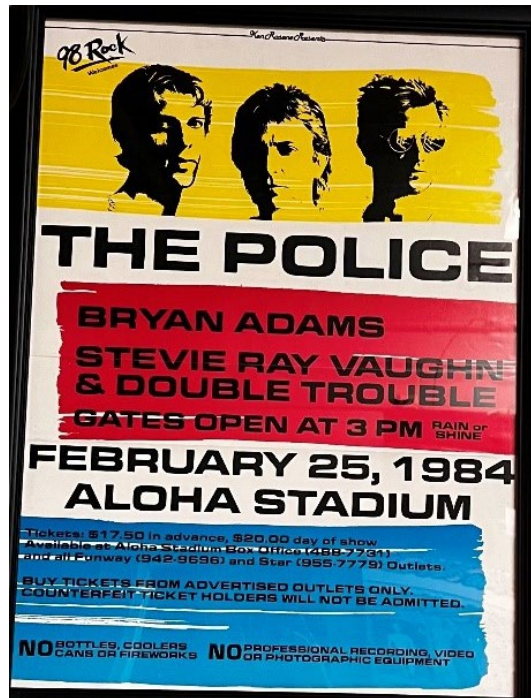
[LIN'S HAWAIIAN SNACKS
SWAP MEET & MARKETPLACE](#)

This Month in History: Were you there?

February 1984

The Police-Farewell Concert

On Feb. 25, 1984, The Police played in front of more than 31,000 fans at Aloha Stadium, making it one of the largest "concert" crowds ever at the stadium. The playlist on that Saturday included such hits as Spirits in the Material World, Invisible Sun, and Roxanne. As you can see from the vintage concert poster, Bryan Adams and Stevie Ray Vaughn & Double Trouble opened the concert that evening before the three lads took the stage. Back in 1984, advance tickets were \$17.50, with day-of tickets going for \$20. For those who want to reminisce, we found this clip featuring two songs from the concert:-



[WATCH HERE](#)

UH SPOTLIGHT

Tributes

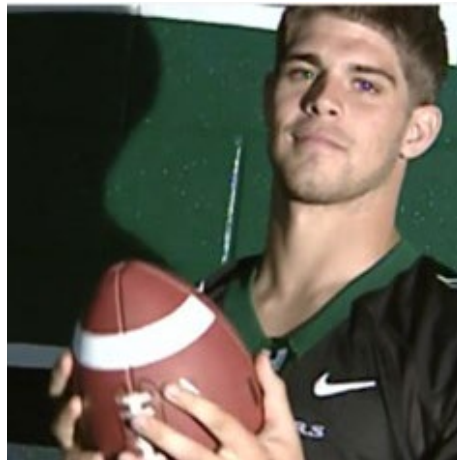
As Aloha Stadium bids a final farewell,
we give tribute to those who have been such a huge part of the Stadium 'Ohana.
Tributes are courtesy of Rob DeMello, KHON2

[Jim Leahy](#)
[WATCH HERE](#)

[Robert Kekaula](#)
[WATCH HERE](#)



Colt Brennan
WATCH HERE



Industry Update



Optus Stadium

Optus Stadium seats 60,000 fans and opened in Perth, Australia in 2018. The multi-purpose stadium is home to the West Coast Eagles and the Fremantle Dockers of the

Australian Football League (rugby), while also hosting the Perth Scorchers of the Big Bash cricket league. It hosts a range of other sporting events, and has welcomed such super teams as Manchester United FC and Chelsea FC, in addition to superstars such as Ed Sheeran, Taylor Swift, U2 and the Red Hot Chili Peppers.

Designed as a “stadium in a park,” Optus Stadium has won many awards, including the Stadium Business Awards “Venue of the Year” in 2022 and “Project of the Year” in 2018.

How is this multi-purpose stadium relevant to the new Aloha Stadium? Well, Optus Stadium was delivered via a Design-Build-Finance-Maintain (DBFM) model, the same model that is proposed to be used for the new Aloha Stadium. This model ensures that maintenance is considered in the initial design and pricing of the project. This ensures a high-quality facility and a “no-surprises” approach to operations and maintenance costs.

Learn more about the Optus Stadium.

WATCH HERE

Mahina ‘Ōlelo Hawai‘i: Hawaiian Language

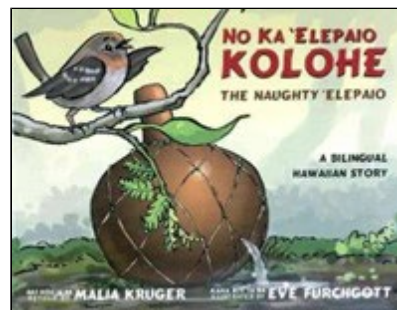


February is Mahina ‘Ōlelo Hawai‘i, or Hawaiian Language Month. As the month comes to a close, the project team wants you to know that the Stadium Project and the Real Estate Project are required to incorporate a Hawaiian sense of place into designs and planning, which includes artwork and educational features that honor Hawai‘i’s host culture as well as our rich melting pot community.

Read with your Keiki

'ŌLELO HAWAI'I

ENGLISH



Learn More

- [‘Aha Pūnana Leo \(ahapunanaleo.org\)](http://ahapunanaleo.org)
- <https://kanaeokana.net/>
-

Hawaiian language | Mahina 'Ōlelo Hawai'i (mahinaolelohawaii.org)

- [Nā Puke Wehewehe 'Ōlelo Hawai'i](#)

Get in Touch

We're always looking for feedback on the e-newsletter. If you have anything to share, please reach out to us via the [Get In Touch](#) page on our website.

If you would like to receive e-newsletters for the New Aloha Stadium Community Newsletter, please register [here](#).

Quick Links

[NASED Media](#)

[Website and FAQs](#)

[Community Meetings](#)

Copyright © 2023 nased.hawaii.gov All rights reserved.

Want to change how you receive these emails?
You can [update your preferences](#) or [unsubscribe from this list](#).