

# NASED Master Plan and the DEIS

Neighborhood Board 20 – Aiea – Nov. 9, 2020

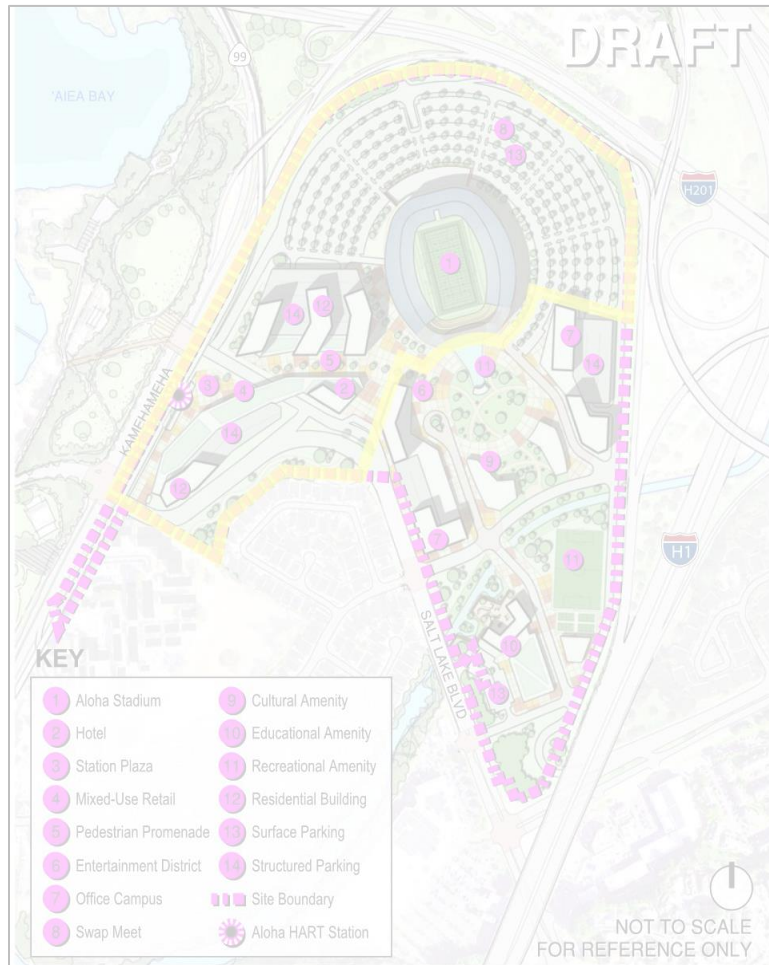
Neighborhood Board 18 – Āliamanu, Salt Lake, Foster Village – Nov. 12, 2020

Aiea Community Association – Nov. 16, 2020

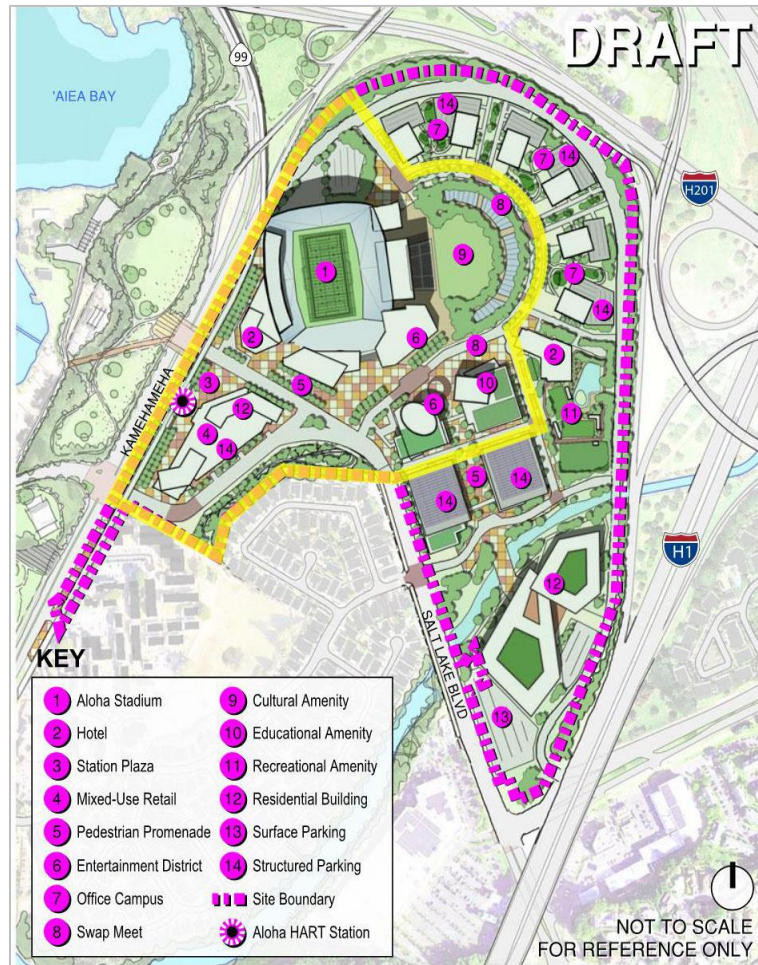
## NASED Mission

Through robust market assessment and industry engagement, and a considered phased approach, the NASED Program will deliver a world class and community-centric mixed use district, with an emphasis on developing tourism and entertainment opportunities, anchored by a new sports and entertainment venue that catalyzes ongoing successful development of the district for the benefit of the State of Hawai‘i.

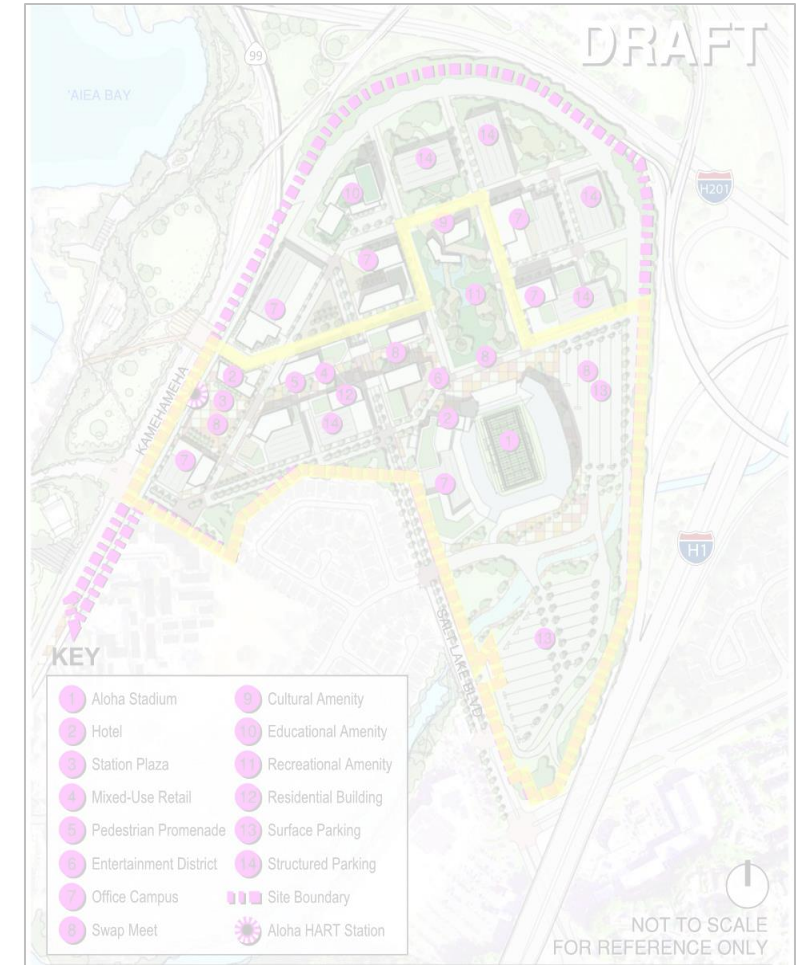
# Site Concepts



Option A



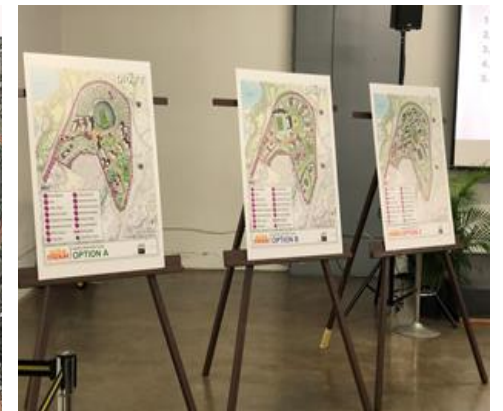
Option B



Option C



# Community Outreach

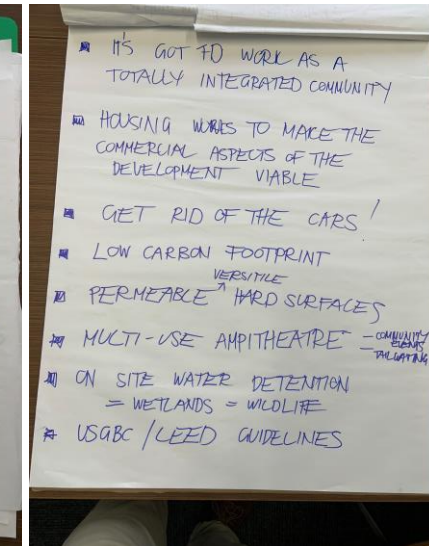
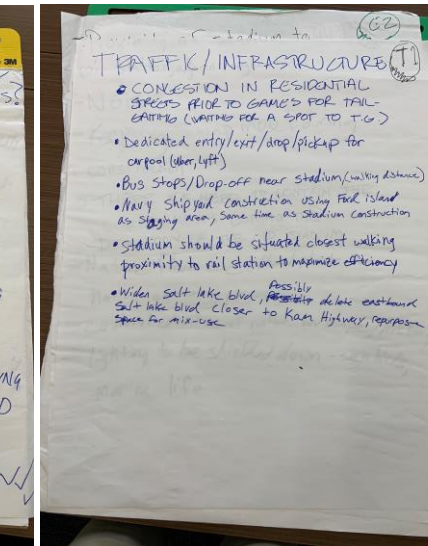
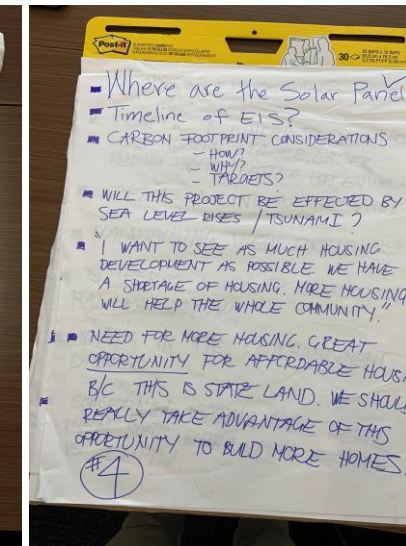
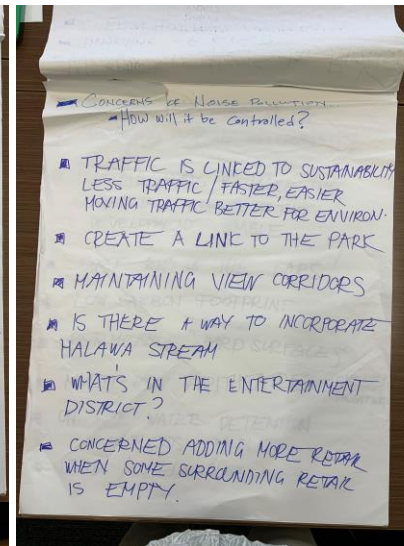
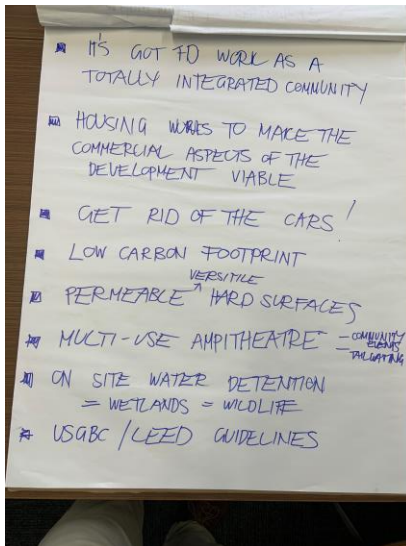
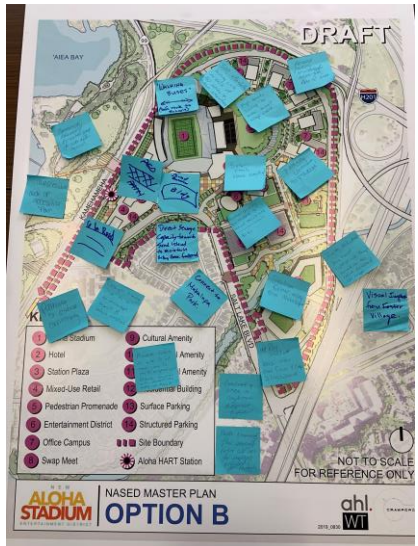




# Community Outreach

*Roundtable discussion was recorded both by the public who were provided ample writing utensils and post-it notes as well as by designated scribes at each table*

- Below is the record of the “Environmental and Sustainability, Surrounding Community” table from the Master Planning Community Workshop



## Meeting Summary:

### Traffic Impacts

- Concern about increased traffic
- Need to widen Salt Lake Blvd.
- Bike, Rail, and Pedestrian traffic must be integrated

### Affordable Housing

- Space should be used for affordable housing
- There should be more affordable housing than hotels

### Recreational Opportunities

- Desire for open space
- Story boards and/or mini museums for cultural education
- Bicycle friendly areas
- Multi-use parking lots

### Stadium Capacity

- Concern with capping the capacity at 35,000 and recommended at least 40,000
- There should be expansion opportunities

### Swap Meet

- Concern about the future of the Swap Meet
- Hundreds of vendors affected if closed

### Environmental Concerns

- Importance of containing contaminants during demolition
- Dredge Halawa Stream

### Communication and Transparency

- There should be better communication
- “Back and forth” creates confusion

### Construction and Budgetary Concerns

- Must remain in budget
- Stadium should not be moved closer to housing
- Design to minimize rust

# Master Planning Community Workshop

12/19/2019

## Meeting Summary:

### Traffic, Roads, Parking (Transportation Infrastructure)

- Adequate parking
- Noise protection
- Parking to accommodate tailgating/etc.
- Improve Traffic Flow
- Pedestrian access
- Affordable housing
- Greenspace
- Viewsheds

### Site Program and Amenities, Recreation, Culture

- Activities for a wide range of users
- Connection to Pearl Harbor
- Retail at HART
- Bike friendly
- Include museum
- Create livable, connected community
- Affordable housing

### Stadium Design and Events

- Proximity to rail
- Minimize noise
- Keep Swap Meet
- Manage dust/etc. during construction
- Use native flora
- Option C is too close to houses
- Pedestrian promenade
- Cultural education
- Mitigate light

### Environmental and Sustainability, Surrounding Community

- Limit car use
- Lower carbon footprint
- Integrate permeable surfaces
- LEED builds
- Water retention
- Use solar panels
- Address climate change

### Virtual Reality and Physical Model Station

- Affordable housing
- Create open spaces
- Maintain a sense of place
- Murals on buildings
- Consider outward as well as inward views
- Create plazas with field views

# Master Planning Stakeholders Workshop

01/27/2020

## Meeting Summary:

### Traffic, Roads, Parking (Transportation Infrastructure)

- Improved space for Swap Meet
- Dedicated ride-share locations
- Tailgating space
- Bike friendly
- Quality asphalt
- Connectivity to rail
- Space for Swap Meet & State Fair
- Connect to H-1

### Site Program and Amenities, Recreation, Culture

- Hawaiian design
- Permanent ATMs
- Swap meet needs to be on concrete
- Rest nodes and seating
- Add public restrooms
- Add lighting for early morning Swap Meet setup

### Stadium Design and Events

- Space for marching band warmup
- Mix State Fair with amphitheater
- Rain shield
- Rugby field size
- Graduation logistics
- Improve lighting
- ADA compliance
- Permanent fair assets

### Environmental and Sustainability, Surrounding Community

- No comments provided

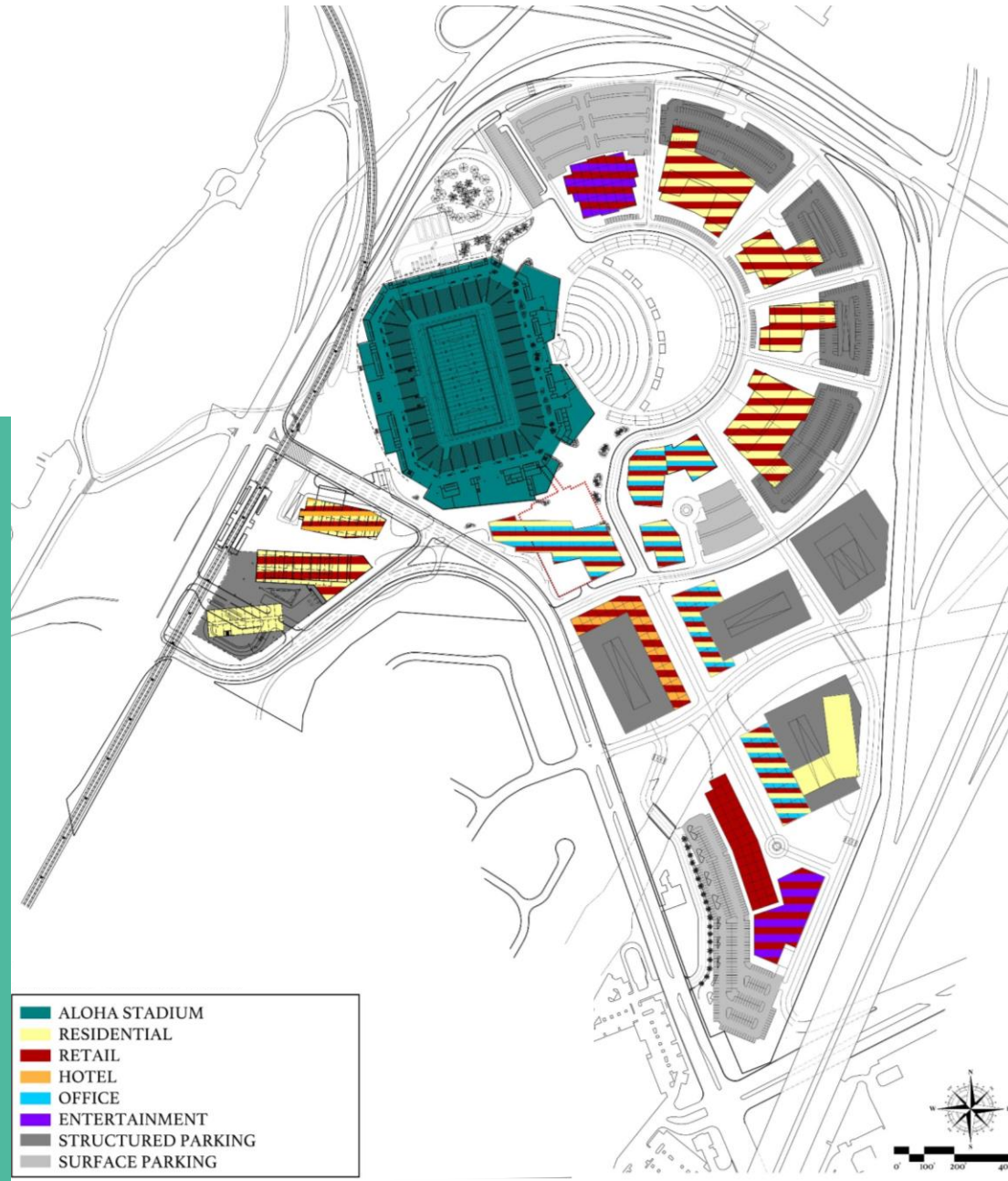
### Virtual Reality and Physical Model Station

- No comments provided



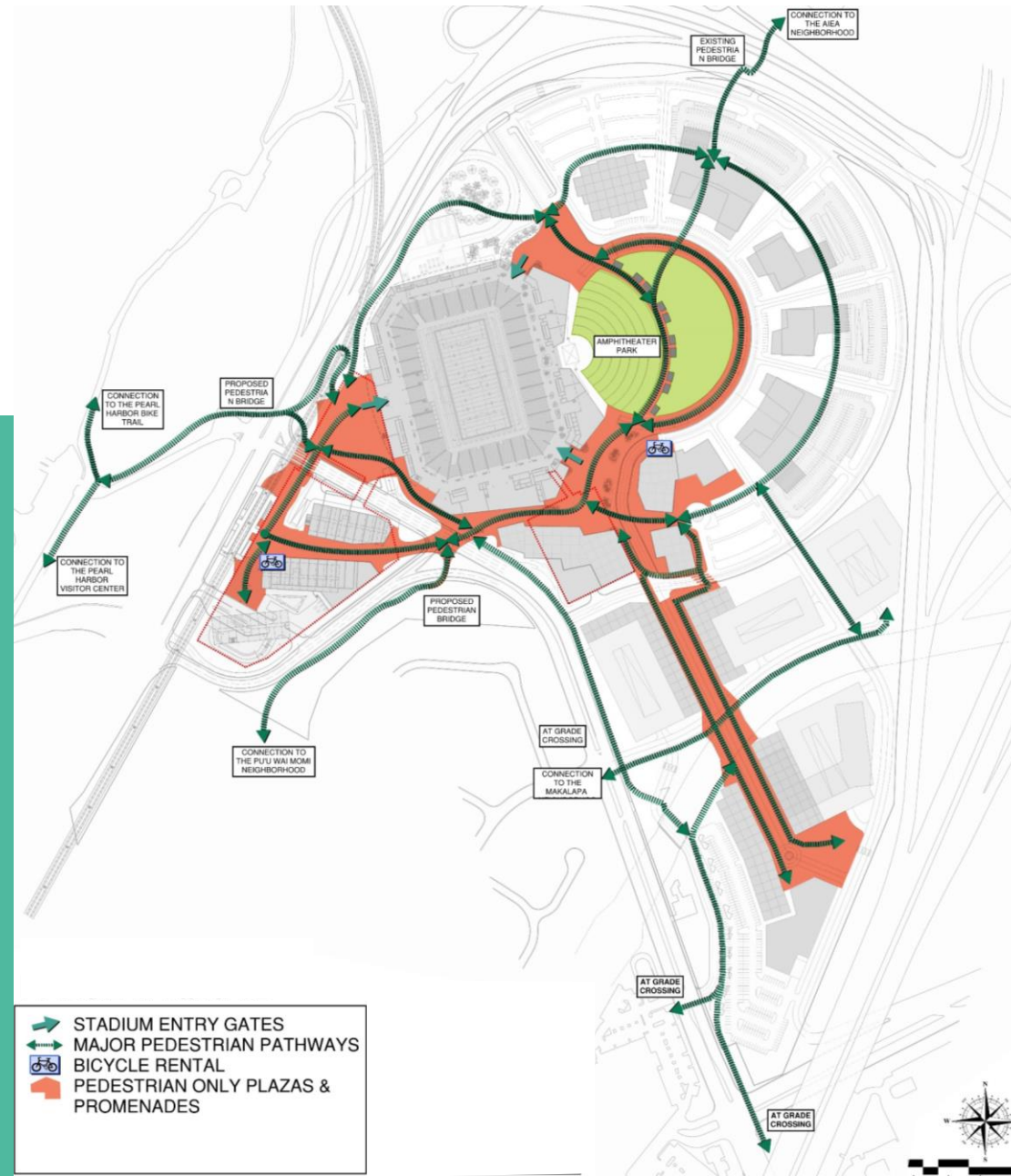


# Programmatic Master Plan



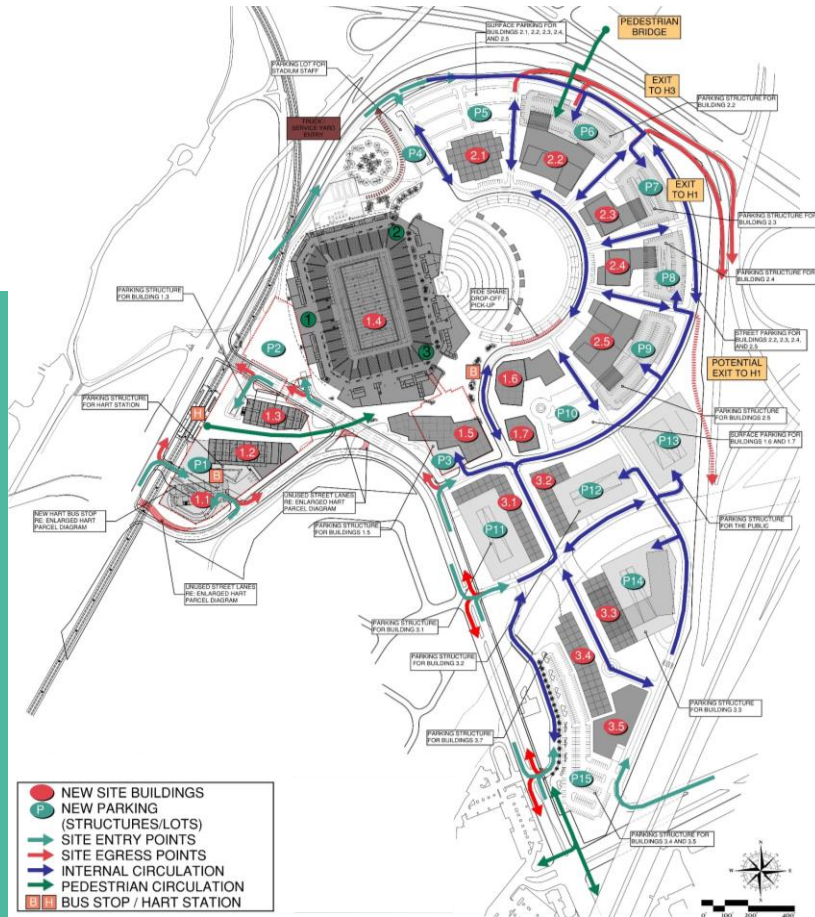
# Land Use Plan



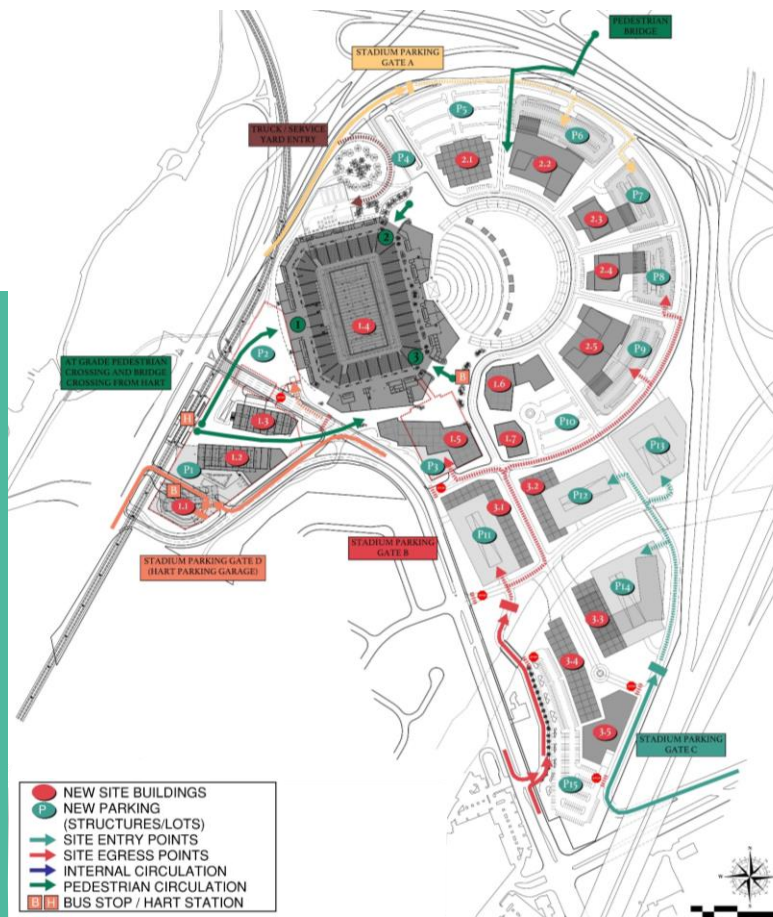


# Pedestrian Space and Movement

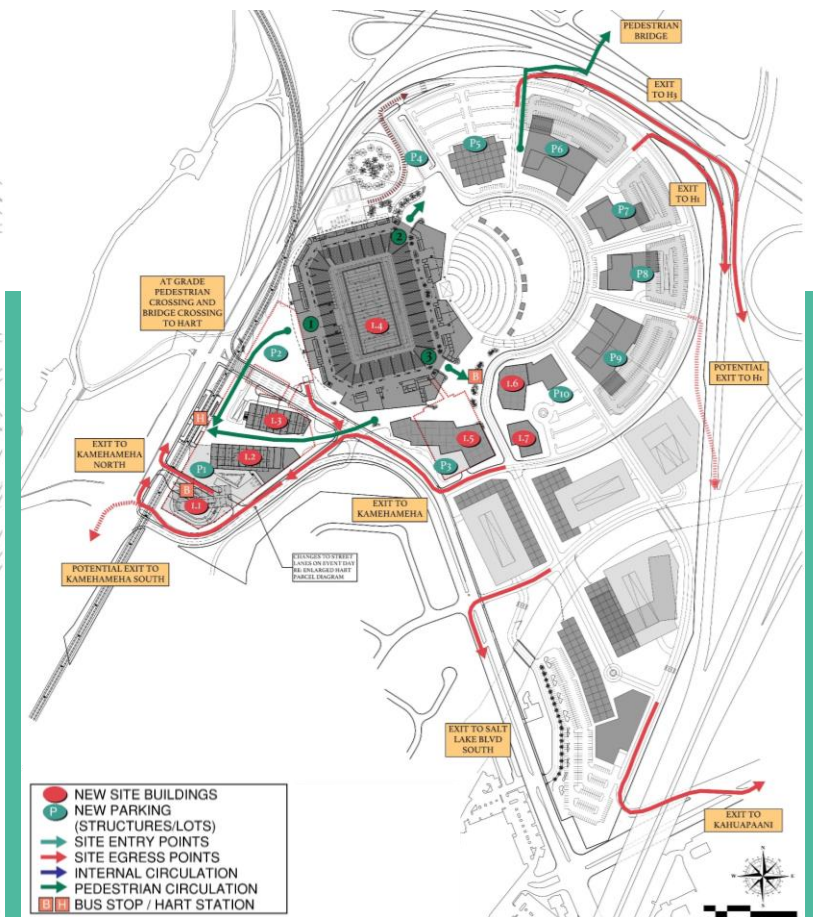




Daily Use

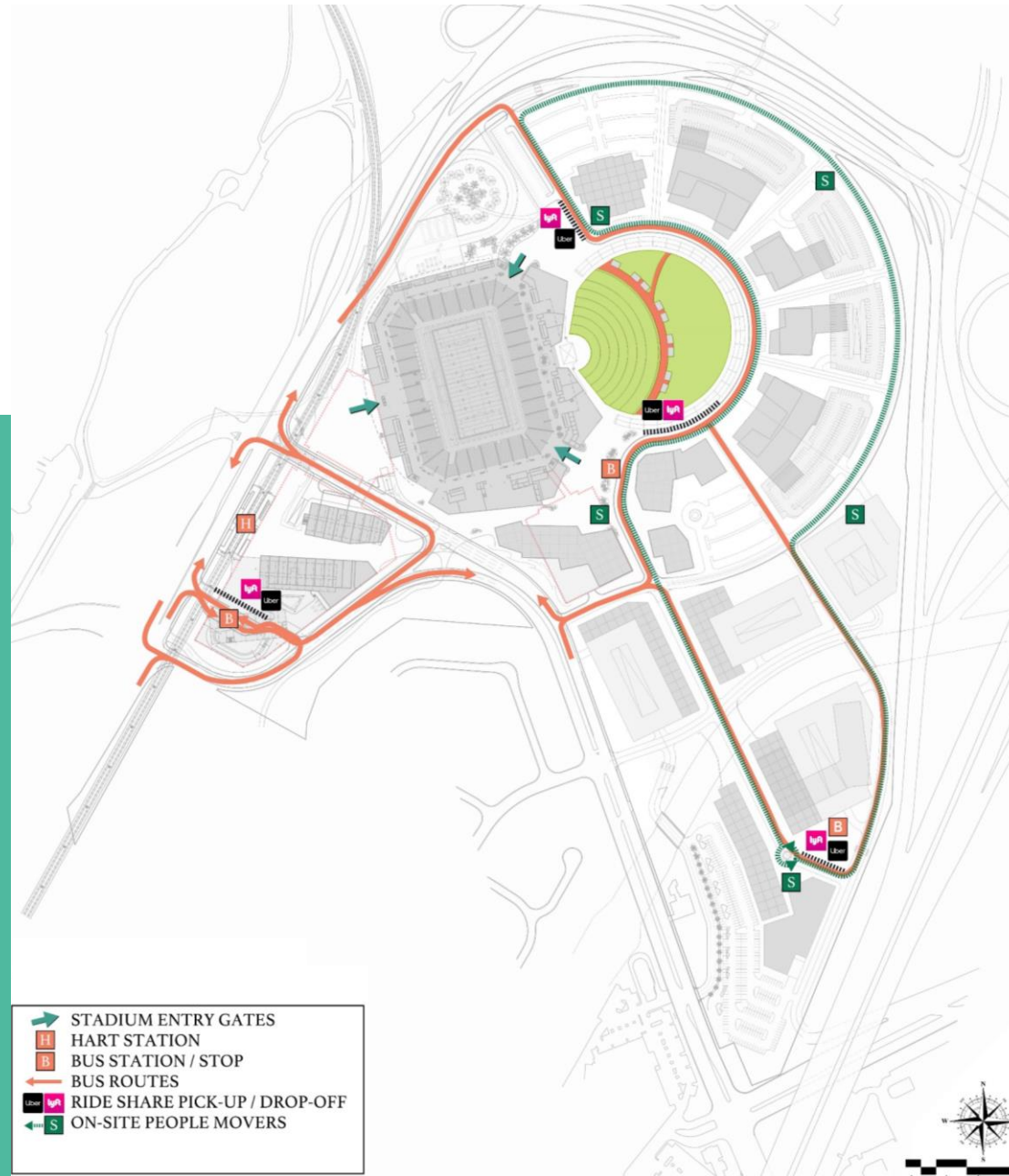


Event Day Ingress



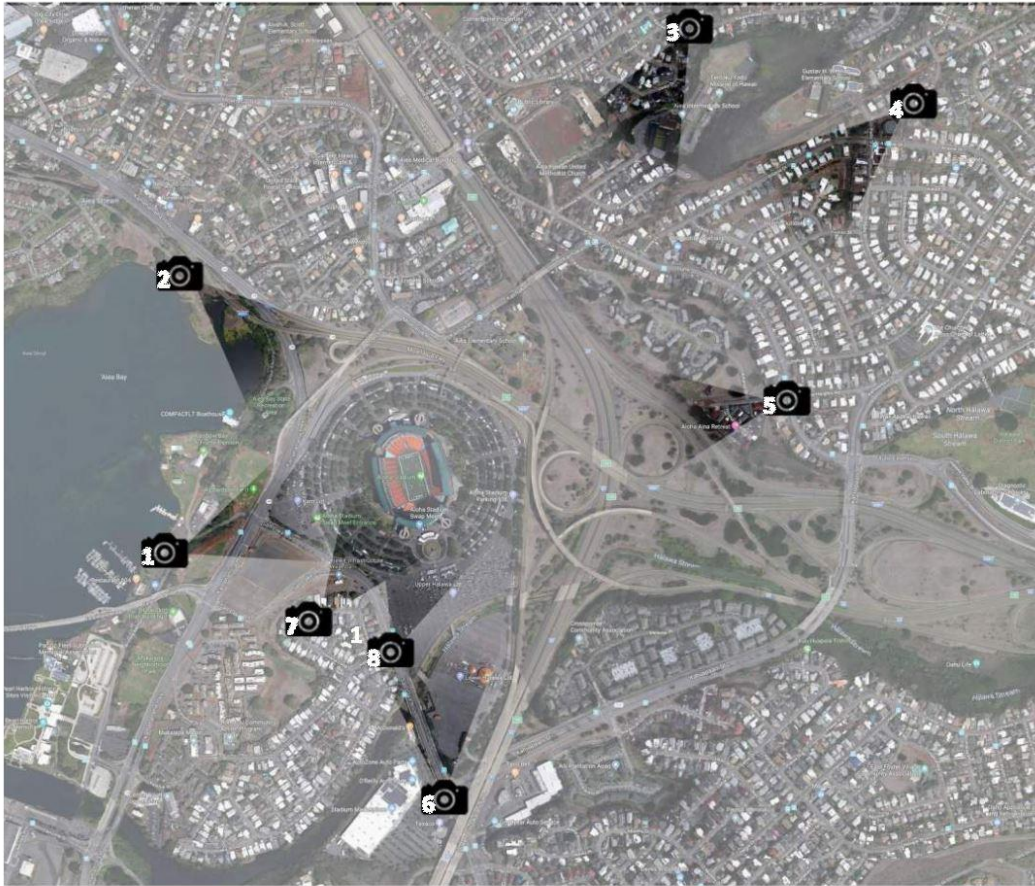
Event Day Egress

# Traffic Study



# Multi-modal Transportation





# View Shed Study



















An architectural rendering of the New Aloha Stadium Entertainment District. The image shows a large, modern stadium with a curved roof and a glass facade. In the foreground, there are several multi-story buildings with green roofs and modern architecture. The area is surrounded by landscaped grounds with palm trees and walkways. The overall scene is depicted in a dark, moody style with a greenish tint.

# NEW ALOHA STADIUM ENTERTAINMENT DISTRICT

DRAFT PROGRAMMATIC  
ENVIRONMENTAL IMPACT STATEMENT

November 2020



PREPARED FOR:  
**STATE OF HAWAII**  
DEPARTMENT OF ACCOUNTING AND GENERAL SERVICES

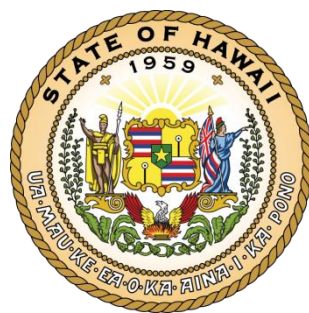
WILSON OKAMOTO CORPORATION | CRAWFORD ARCHITECTS

# Draft Programmatic Environmental Impact Statement (DPEIS)



# QUESTIONS AND ANSWERS





[www.nased.hawaii.gov](http://www.nased.hawaii.gov)